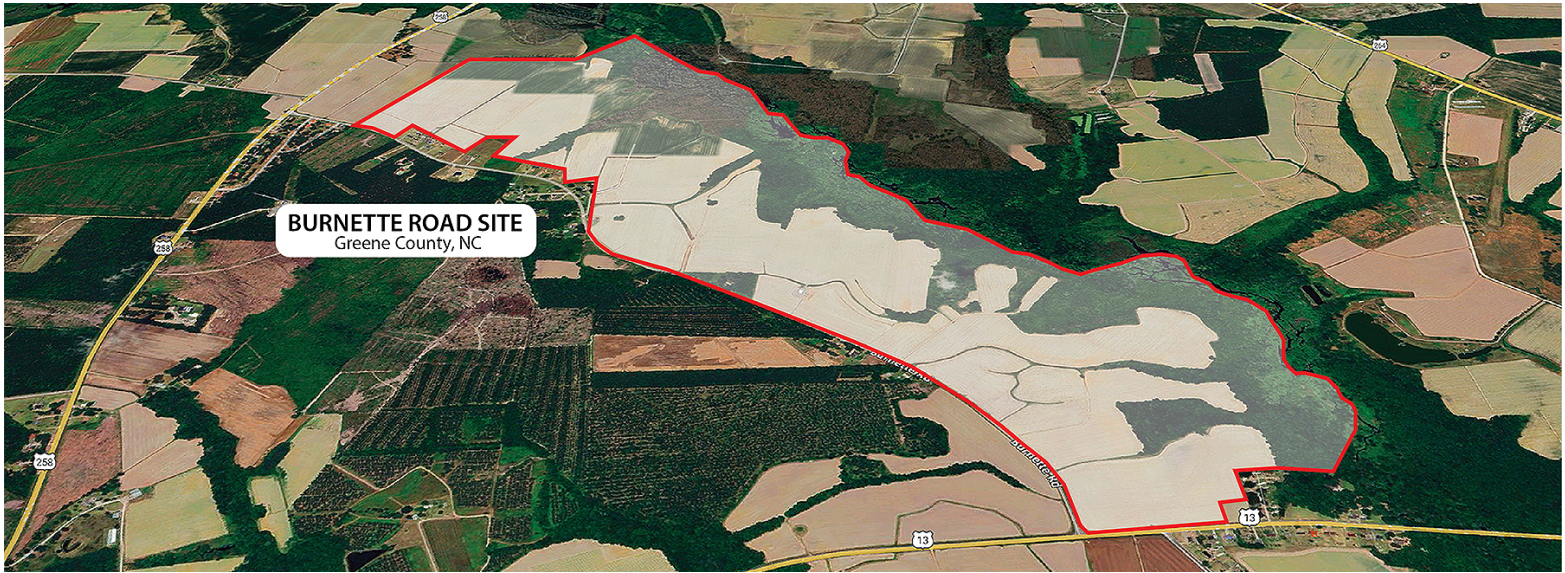


# Burnette Road - 630 Acre Site

1333 Burnette Road, Olds township, North Carolina 27828 - Greene County



## Property Details

**Latitude/Longitude:** 35.5419, -77.5751

**Type of space:** Industrial, Agriculture

**Min Size:** 25 acres

**Max Size:** 630 acres

**Last Updated:** 1/5/2025

## ED Contact

**Company:** Greene County Economic Development

**Contact Name:** Trey Cash

**Email:** [trey.cash@greencountync.gov](mailto:trey.cash@greencountync.gov)

**Website:** <http://http://www.greencountync.gov/>

## Documents

[Information on Land Option Agreements.pdf](#)

[Map of entire site with utilities](#)

[Flyer Burnette Road 630 acres.pdf](#)

[Topo Map of Site](#)

[Flood Map.pdf](#)

[Will Serve for Natural Gas](#)

[Will Serve for Water and Sewer .pdf](#)

[Will Serve for Power](#)

[Will Serve for Telecommunications pdf](#)

## Availability

**For Sale:** Yes

**Sale Price:** \$15,000

**Sale Terms:** CPI Increases Each Year in September



Greene, Lenoir, Wayne Counties and the Global TransPark

## Transportation

**Nearest Airport:** Pitt-Greenville Airport

**Distance to Airport:** 17 miles

**Closest Airport 2:** North Carolina Global TransPark

**Distance to Airport 2:** 20

**Airport 3:** Raleigh Durham International Airport

**Distance to Airport 3:** 83

**Port:** Port of Morehead

**Distance to Port:** 91 miles

**Port Name 2:** Port of Wilmington

**Distance to Port 2:** 117

**Nearest Interstate:** Interstate 587

**Distance to Interstate:** 4.8 miles

**Name of Interstate 2:** Interstate 95

**Distance to Interstate 2:** 29.8

**Nearest Highway:** Highway 258

**Distance to Major Highway:** .5 miles

**Highway Name 2:** Highway 13

**Distance to Highway 2:** 3

**Parking:** No

**Paved Parking:** No

**Rail Access:** No

**Rail Provider:** Shortline

**Rail Spur on Site:** No

**Rail Adjacent to Site:** No

**Runway Access:** No

## Utilities

**Power On Site:** Yes

**Electric Service Provider:** Pitt & Greene EMC

**Gas On Site:** Yes

**Natural Gas Provider:** Piedmont Natural Gas

**Natural Gas Line Size:** 8 in

**Sewer On Site:** Yes

**Sewer Provider:** Greene County

**Water On Site:** Yes

**Water Service Provider:** Greene County

**Water Line Size:** 8" in

**Broadband:** Yes

**Telecom:** Yes

**Telecom Provider:** InfinityLink

**Natural Gas Available:** Yes

**Water Available:** Yes

**Septic on Site:** Yes

**Distance to Gas:** .1

**Distance to Sewer:** .25

**Distance to Water:** 0

**Gas PSI:** Transmission Pressure

**Water Excess Capacity:** 3.81 million MGD

**Sewer Available:** Yes

## Description

The **Burnette Road Site** offers up to 630 acres of prime industrial land under a land option. Strategically located near the Town of Farmville, this property combines extensive infrastructure, connectivity, and workforce access to position itself as a leading industrial destination in Eastern North Carolina.

### Site information:

#### Infrastructure Highlights:

- **Utilities:**

- 8-inch natural gas transmission line (Piedmont Natural Gas).
- Power is supplied by Pitt & Greene EMC, with a major transmission line within half a mile.  
InfinityLink Telecommunications Provider  
Greene County Water and Sewer.  
8-inch water line (current waterline can serve 200,000+ GPD)  
Farmville's wastewater treatment plant currently has the available surplus capacity of 1.0 million gallons per day (MGD).

#### Transportation Advantages:

- **Highways and Interstates:**

- 4.8 miles (5 minutes) to Interstate 587.
- 29.8 miles (32 minutes) to Interstate 95.
- 117 miles (1 hour 56 minutes) to the Port of Wilmington (mostly four-lane highways).
- 91 miles (1 hour 52 minutes) to the Port of Morehead City (mostly four-lane highways).

- **Rail and Air Access:**

- 3.4 miles to short line rail access.
- 41 miles (57 minutes) to the CSX Intermodal Terminal (CCX).
- 17 miles (25 minutes) to Pitt-Greenville Airport.
- 83 miles (1 hour 15 minutes) to Raleigh-Durham International Airport.
- 20 miles to the North Carolina Global TransPark.
- 30 miles to Seymour Johnson Air Force Base.

#### Access to Workforce and Education:

The Greene County site is within a **60-minute drive labor shed** that includes major North Carolina cities such as Greenville, Wilson, Raleigh, Rocky Mount, Goldsboro, Kinston, and Washington. Nearby educational institutions bolster the region's skilled workforce:

- East Carolina University: 15 miles (21 minutes) away.
- North Carolina State University: 73 miles (1 hour 5 minutes) away.

## Contact

**Company:** North Carolina Global TransPark Economic Development Region

**Name:** Mark Pope

**Phone:** 252-55-3907

**Email:** [mark.pope@ncgtpedr.com](mailto:mark.pope@ncgtpedr.com)

**Webpage:** [www.ncgtpedr.com](http://www.ncgtpedr.com)



Greene, Lenoir, Wayne Counties and the Global TransPark